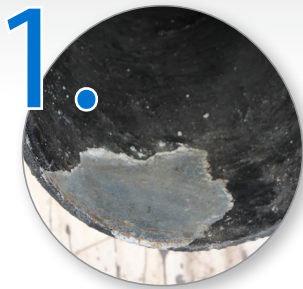


# HOW TO PATCH CEMENT-MORTAR LINING OF DI PIPE TIP SHEET

[McWaneDuctile.com/Blog](http://McWaneDuctile.com/Blog)

## DO IT RIGHT IN THE FIELD

Cement-Mortar Lining is used as the standard Ductile iron pipe lining to increase flow efficiency and prevent corrosion. There may be occasions in the field when patching of the cement lining is necessary.



### CUT OUT DAMAGE

Prepare the area by cutting out the damaged area, slightly undercutting the remaining lining. Using a wire brush, clean the damaged surface to its metal surface.



### PREPARE CEMENT\*

To prepare the cement-mortar, use a clean bucket or container to mix the materials. Mix a stiff mortar consisting of one part cement and two parts sand by volume. Add water and mix well until it is consistent.



### WET AREA

Before applying the mortar mixture, take a wet rag or towel and moisten the area to be repaired as well as the surrounding area. This allows the patch to adhere better.



### APPLY CEMENT LINING

Using a trowel, apply the cement mixture to the damaged area smoothly and evenly to create a smooth transition to the undamaged lining. Use a wet rag to rub off any high edges or uneven spots.



### APPLY SEAL COAT\*

Within 5-30 minutes of applying the cement, you should apply seal coat over the patched area (if seal coat is required).



### ALLOW TO DRY

After applying seal coat, you may use a wet canvas or a burlap sack over the pipe or fitting to ensure proper curing of the cement lining. For more detailed information and a helpful video, go to [mcwaneductile.com/blog](http://mcwaneductile.com/blog)

*\*Note: The cement and seal coat used for repairs should be provided by or approved by the manufacturer to ensure NSF 61 and NSF 372 compliance.*