



IRON STRONG

McWaneDuctile.com

A close-up photograph of a large, orange-painted ductile iron flange and pipe. The flange has several bolt holes and embossed markings. The pipe has a textured surface. A blue semi-transparent box is overlaid on the right side of the image, containing white text.

**FABRICATED
FLANGE AND
WALL PIPE**

3"-48"



McWane Ductile is a division of McWane, Inc.

For Generations

FABRICATED PIPE FROM MCWANE DUCTILE

Fabricated Flange & Wall pipe is manufactured by McWane Ductile in 3" up to 48" diameters with various joint combinations available. Our fabricated products can be manufactured to meet all USA domestic requirements.

Fabricated pipe is made to custom lengths to meet specific project needs. Pipe interior surfaces can be cement, glass, or Protecto 401™ lined to meet all applications.

Exterior coatings available include standard Bituminous, Themec primers and epoxies, as well as other specialty coatings as required.

Contact your representative for a complete selection of options available.

When required by specifications, McWane Ductile can manufacture pipe with appurtenances added to the pipe barrel. McWane Ductile can make these customizations to meet your needs, including holes, NPT Taps, Weld-on Bossed Outlets and Thread-O-Lets.

McWane Ductile can also provide customized take-offs, line drawings and lay schedules as required for your projects.

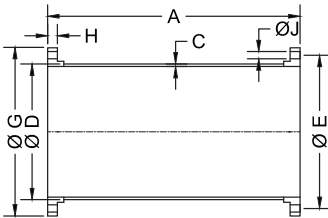
FABRICATED PIPE JOINT



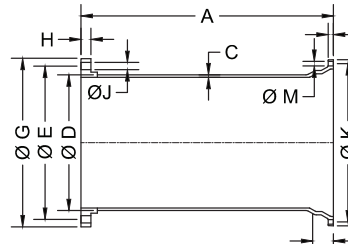
FLANGE PIPE DETAILS & DIMENSIONS

SIZE	A	C	Ø D	Ø E	Ø G	Ø G1	H	NO FLG BOLT HOLES	Ø J	Ø K	L	NO MJ BOLT HOLES	M	P
3	AS REQUIRED	0.31	3.96	6.00	7.50	7.69	0.63	4	0.75	6.19	0.88	4	0.75	2.50
4		0.32	4.80	7.50	9.00	9.12	0.82	8	0.75	7.50	0.94	4	0.88	2.50
6		0.34	6.90	9.50	11.00	11.12	0.88	8	0.88	9.50	1.00	6	0.88	2.50
8		0.36	9.05	11.75	13.50	13.37	1.00	8	0.88	11.75	1.04	6	0.88	2.50
10		0.38	11.10	14.25	16.00	15.69	1.07	12	1.00	14.00	1.11	8	0.88	2.50
12		0.40	13.20	17.00	19.00	17.94	1.13	12	1.00	16.25	1.17	8	0.88	2.50
14		0.42	15.30	18.75	21.00	20.31	1.19	12	1.13	18.75	1.19	10	0.88	3.50
16		0.43	17.40	21.25	23.50	22.56	1.25	16	1.13	21.00	1.26	12	0.88	3.50
18		0.44	19.50	22.75	25.00	24.83	1.37	16	1.25	23.25	1.32	12	0.88	3.50
20		0.45	21.60	25.00	27.50	27.08	1.50	20	1.25	25.50	1.38	14	0.88	3.50
24		0.47	25.80	29.50	32.00	31.58	1.69	20	1.38	30.00	1.50	16	0.88	3.50
30		0.51	32.00	36.00	38.75	39.12	1.87	28	1.38	36.88	1.69	20	1.13	4.00
36		0.58	38.30	42.75	46.00	46.00	2.13	32	1.63	43.75	1.88	24	1.13	4.00
42		0.65	44.50	49.50	53.00	53.12	2.37	36	1.63	50.62	1.88	28	1.38	4.00
48		0.72	50.80	56.00	59.50	60.00	2.50	44	1.63	57.50	1.88	32	1.38	4.00

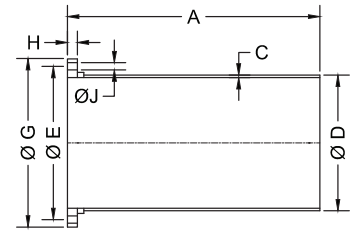
FLG X FLG



FLG X MJ

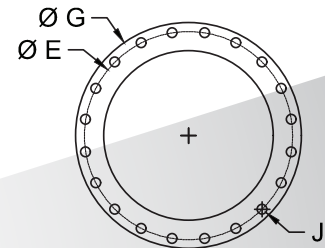


FLG X PE



- ▶ Tolerance on length of FLG x FLG and FLG x MJ pipe shall be +/- .125".
- ▶ Tolerance on length of FLG x PE shall be +/- .0625".
- ▶ Above material shall meet all applicable sections of ANSI A21.10, A21.15, A21.50, A21.51, B2.1, B16.1 / AWWA C110, C115, C150, C151 and all revisions thereto.
- ▶ Flanged pipe shall be Ductile iron pipe with Ductile iron flanges threaded on.
- ▶ Flange pipe is provided with cement lining per ANSI/AWWA A21.4/C104. Consult Sales Representative if other linings are required.
- ▶ The mechanical joint bell for 30" and 36" sizes of Ductile iron pipe have thicknesses different from those shown in ANSI A21.11, which are based on grey iron pipe. The reduced thickness provided a lighter-weight bell, which is compatible with the wall thickness of Ductile iron pipe.
- ▶ Submitted material only. Consult Engineer for application.
- ▶ 250 lb. faced and drilled flanges available upon request.
- ▶ CL53 Minimum Wall Thickness for all Fabricated Products.
- ▶ Grooved pipe to meet ANSI/AWWA C606 also available, consult Sales Representative for details.

FLANGE DETAIL

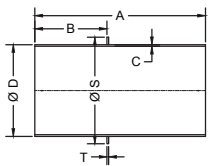


Additional configurations for joint connections are available. Contact a McWane Ductile Sales Representative for details.

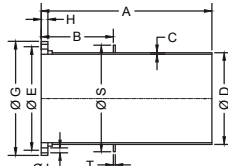
WALL PIPE DETAILS & DIMENSIONS

SIZE	A		B	C	Ø D	Ø E	Ø G	Ø G1	H	NO FLG BOLT HOLES	Ø J	Ø K	L	NO MJ BOLT HOLES	M	P	Ø S	T
	MIN	MAX																
3	AS REQUIRED	AS REQUIRED (MAX. LENGTH: 3'-36" = 17'-6", 42"/48" = 19'-6")	AS REQUIRED	0.31	3.96	6.00	7.50	7.69	0.63	4	0.75	6.19	0.88	4	0.75	2.50	6.50	0.50
4				0.32	4.80	7.50	9.00	9.12	0.82	8	0.75	7.50	0.94	4	0.88	2.50	7.40	0.50
6				0.34	6.90	9.50	11.00	11.12	0.88	8	0.88	9.50	1.00	6	0.88	2.50	9.50	0.50
8				0.36	9.05	11.75	13.50	13.37	1.00	8	0.88	11.75	1.04	6	0.88	2.50	12.00	0.50
10				0.38	11.10	14.25	16.00	15.69	1.07	12	1.00	14.00	1.11	8	0.88	2.50	14.10	0.50
12				0.40	13.20	17.00	19.00	17.94	1.13	12	1.00	16.25	1.17	8	0.88	2.50	16.25	0.50
14				0.42	15.30	18.75	21.00	20.31	1.19	12	1.13	18.75	1.19	10	0.88	3.50	18.40	0.50
16				0.43	17.40	21.25	23.50	22.56	1.25	16	1.13	21.00	1.26	12	0.88	3.50	21.00	0.50
18				0.44	19.50	22.75	25.00	24.83	1.37	16	1.25	23.25	1.32	12	0.88	3.50	23.10	0.50
20				0.45	21.60	25.00	27.50	27.08	1.50	20	1.25	25.50	1.38	14	0.88	3.50	25.70	0.50
24				0.47	25.80	29.50	32.00	31.58	1.69	20	1.38	30.00	1.50	16	0.88	3.50	30.00	0.50
30				0.51	32.00	36.00	38.75	39.12	1.87	28	1.38	36.88	1.69	20	1.13	4.00	36.96	0.63
36				0.58	38.30	42.75	46.00	46.00	2.13	32	1.63	43.75	1.88	24	1.13	4.00	43.40	0.63
42				0.65	44.50	49.50	53.00	53.12	2.37	36	1.63	50.62	1.88	28	1.38	4.00	50.00	1.00
48				0.72	50.80	56.00	59.50	60.00	2.50	44	1.63	57.50	1.88	32	1.38	4.00	56.50	1.00

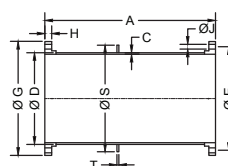
PE X PE



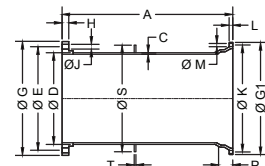
FLG X PE



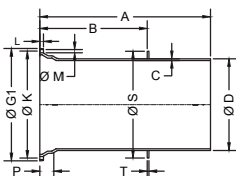
FLG X FLG



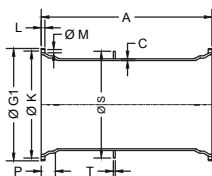
FLG X MJ



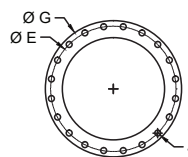
MJ X PE



MJ X MJ



FLANGE DETAIL



- ▶ Tolerance on location of waterstop shall be +/-0.125".
- ▶ All waterstops shall be attached for a water tight seal.
- ▶ All flanges shall be Ductile iron and threaded on Ductile iron pipe per ANSI/AWWA A21.15/C115.
- ▶ MJ x MJ shall have a Ductile iron MJ bell threaded on Ductile iron pipe.
- ▶ Wall pipe is provided with cement lining per ANSI/ AWWA A21.4/C104.

- ▶ Consult Sales Representative if other linings are required.
- ▶ Above material shall meet all applicable sections of ANSI A21.10, A21.15, A21.50, A21.51, B2.1, B16.1 / AWWA C110, C115, C150, C151 and all revisions thereto.
- ▶ Submitted material only. Consult Engineer for application.
- ▶ 250 lb. faced and drilled flanges available upon request.

Additional configurations for joint connections are available. Contact a McWane Ductile Sales Representative for details.



POCKET ENGINEER

Available for iOS + Android
or online at pe.mcwane.com

CONNECT WITH US ON



NEW JERSEY
183 Sitgreaves St.
Phillipsburg, NJ 08865
908-454-1161

OHIO
2266 S. 6th St.
Coshocton, OH 43812
740-622-6651

UTAH
1401 E. 2000 South
Provo, UT 84606
801-373-6910



CANADA
Suite 1, 55 Frid Street,
Hamilton, Ontario, Canada
L8P 4M3

Rev. May 2022